



**CHATSWORTH
INTERNATIONAL SCHOOL**



School Guide



Welcome



*We are one, but we are many,
and from all the lands on Earth
we come. We share our dreams,
and sing with one voice, I am,
you are, we are international.*



Chatsworth School Song

Since our establishment, Chatsworth International School has been offering an exceptional, truly international education in Singapore while maintaining affordable fees. A product of a handful of teachers and students founding the school in Upper Serangoon in 1995, Chatsworth has now moved to a permanent home in Bukit Timah, surrounded by a beautiful natural rainforest environment.

As one of the top IB schools offering the PYP, MYP and DP curriculum, Chatsworth provides each student with a challenging academic experience. Our programme couples traditional teaching and learning practices with 21st Century learning skills to create an individualised and balanced education for every student.

Chatsworth's teaching staff are dedicated, highly qualified and come from all over the globe. With a diverse teaching staff from about 23 nationalities, we ensure that our curriculum incorporates the best of what the world has to offer. With a student body of about 50+ nationalities, we are a truly international school. Our small class sizes allow students to be heard and express themselves, gain confidence, and be recognised for their individual talents. Critical and global thinking skills are nurtured in the context of an international community. Our overall Schoolwide Learner Outcomes (SLOs) state that Chatsworth Learners are: Principled, Balanced, Global Communicators and Thinkers. We say 'Chatsworth learners' because this includes everyone within our community, including staff and parents.

I consider myself privileged to serve as Head of School here at Chatsworth, with our strong reputation for community, pastoral care and holistic education. I encourage you to visit our school, interact with our community and experience, first-hand, why we have students graduate every year who joined us in early years, why we consistently receive full accreditation cycles from WASC, the IB and EduTrust, and why I, and many staff, have remained here at Chatsworth for well over a decade.

Dr. Tyler Sherwood
Head of School

WhichSchoolAdvisor Singapore Best Schools Award
Best IB School Winner, 2022 and 2024
Highly Commended - Best School for the Arts, 2022

HoneyKids Singapore Education Awards
School Where Everybody Knows Your Name, Silver Winner (2025),
Gold Winner (2022 - 2024)
The Curriculum Awards (IB), Editor's Choice (2025), Gold
Winner (2023 and 2024)
Best Art Program, Gold Winner (2021)

Relocate Global Awards
Highly Commended for Excellence in Education - Schools
category, 2025
and more...



Who We Are



Our Vision

We are an internationally-minded community collaborating to provide a holistic learning experience. We value each individual and empower them to find their purpose in the wider world.



Our Mission

Our mission is to Inspire, Educate & Enlighten

To achieve our mission, we:

- Motivate students to meet challenges with confidence and enthusiasm
- Encourage students to become passionate, life-long learners
- Provide all students with a balanced education
- Nurture inquiry-based learning in the context of a changing world
- Foster the development of principled and caring global citizens
- Empower students to become thinkers and problem solvers
- Engage the local and wider community through meaningful partnerships



Our Values, Culture and Beliefs

- Our school is a diverse, internationally-minded community of learners
- The IB Learner Profile is at the centre of our learning experience
- We strive for personal and academic success for all
- We encourage honesty, respect and compassion
- All members of our community have a right to be heard and valued
- We provide a safe school environment

Schoolwide Learner Outcomes

Chatsworth learners are:



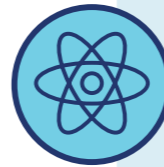
PRINCIPLED

We take safe and informed actions which create a positive impact on our changing world. (Self-Management)



BALANCED

Through adaptability, collaboration and resilience, we lead balanced and compassionate lives. (Social)



GLOBAL COMMUNICATORS

We communicate effectively on multiple platforms in a global context. (Communication)



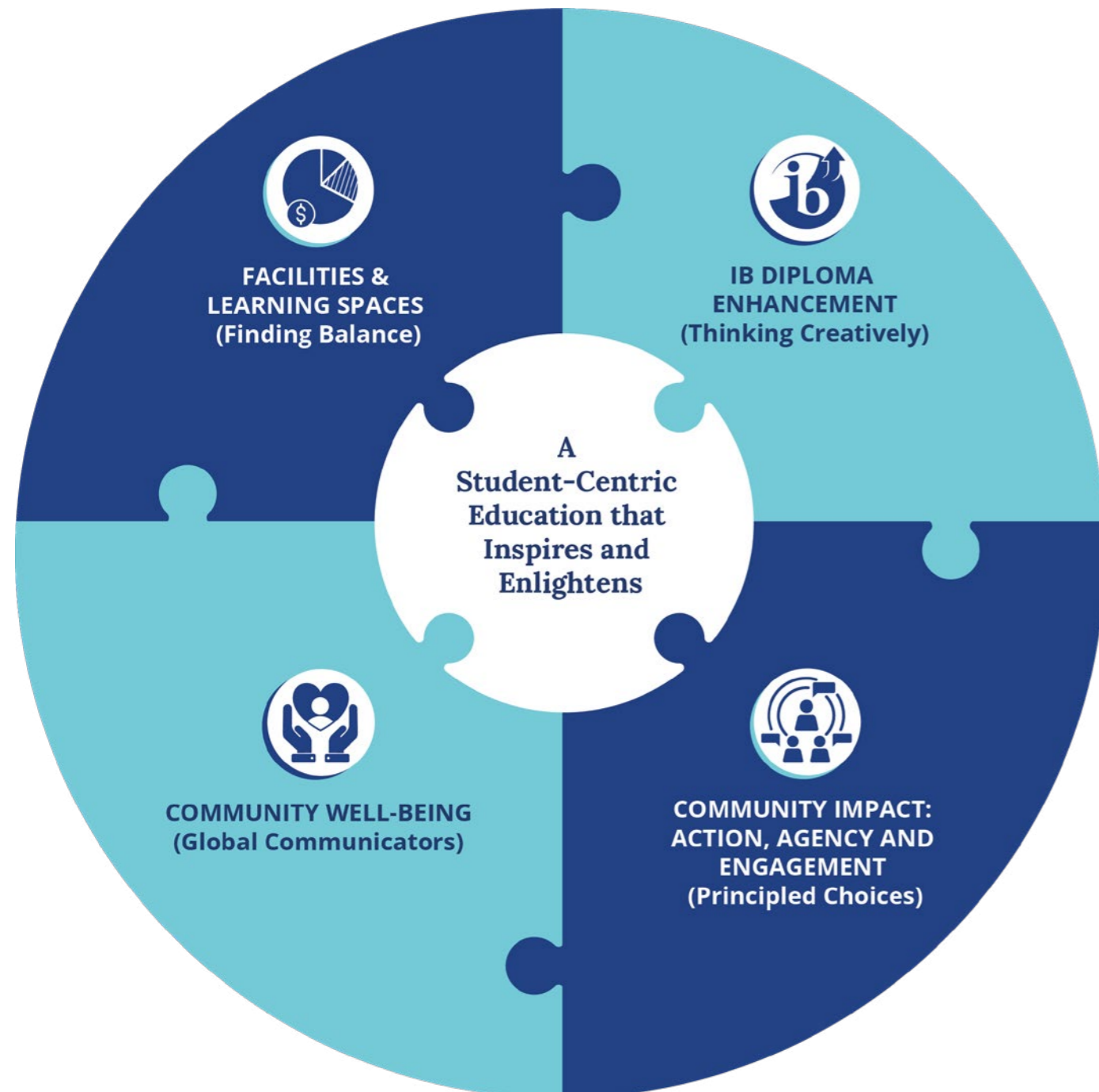
THINKERS

We engage in thought and research to solve problems. (Research & Thinking)



Strategic Plan 2025 - 2028

As part of our 30-year anniversary, Chatsworth International School underwent a strategic planning process with an external consultant. This process involved engaging all members of the community including students, parents, faculty, and leadership to reflect on our achievements, assess our current challenges, and collaboratively define a vision for the future. Through meetings, surveys, and discussions, we identified key priorities that will shape our growth and ensure we continue delivering a student-centered education that inspires and enlightens.

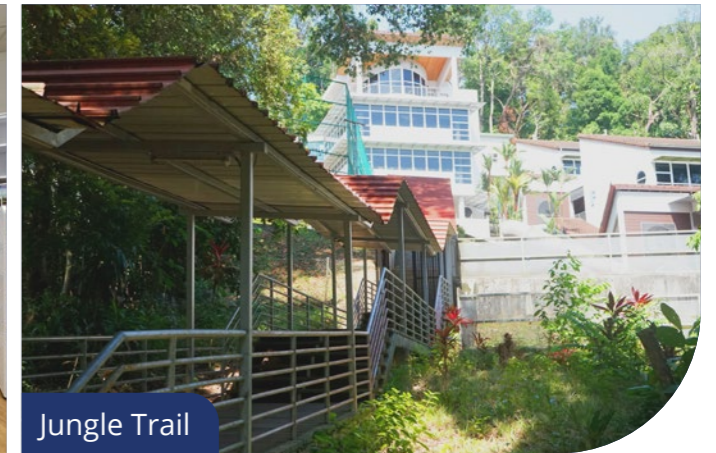


Our Campus

Strategically located next to Singapore's only rainforest, the campus provides an invigorating environment equipped with a variety of facilities that cater to students' learning needs and interests. The campus is just a short ride on our shuttle bus from nearby Sixth Avenue MRT and a 10-minute drive from the heart of the city.



Library



Jungle Trail



Swimming Pool



Classroom



Jungle Playground



Indoor Sports Hall

Basketball Court
Indoor Sports Hall
Multi-purpose Court
Swimming Pool
Football Pitch

Main Hall
Drama Room/Black Box
Art Rooms
Music Rooms
Science Labs

Libraries
Playgrounds and Sandpit
Amphitheater

Celebrating Diversity

We are an internationally-minded community of enthusiastic learners where diversity is our strength. We embrace and celebrate the uniqueness and internationalism of each individual in our community.

Teacher-Student Ratio (K1 & K2)
2:22

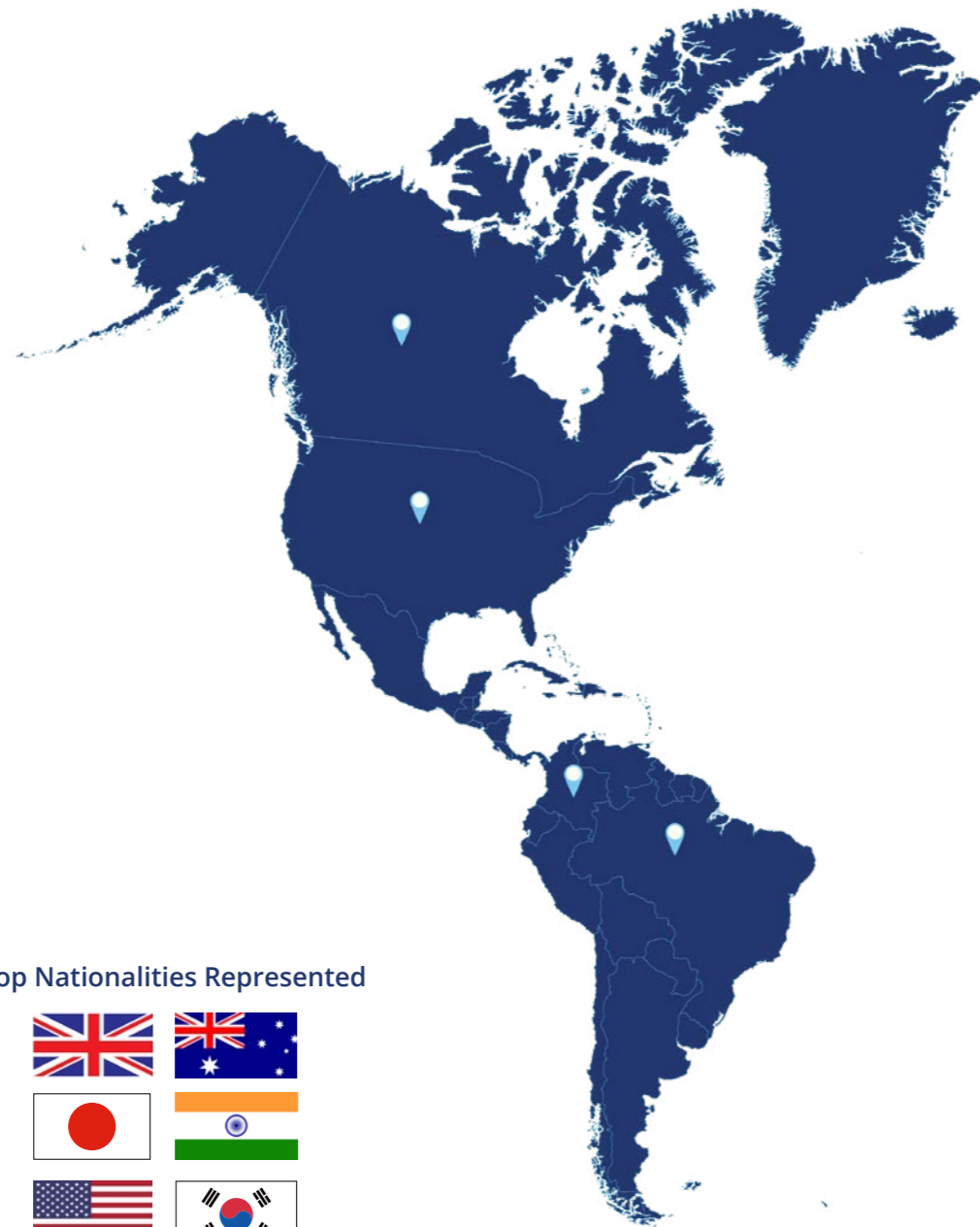
Teacher-Student Ratio (Y1 & Y2)
2:24

Teacher-Student Ratio (Y3 - Y13)
1:24

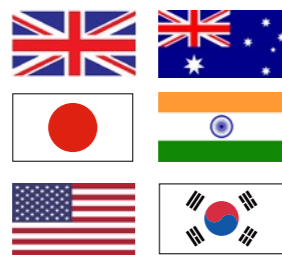
EAL Population
~15%

Teacher Nationalities
20+

Chatsworth students come from all over the globe, representing about 50+ nationalities, with no single nationality over 20% of the student population.



Top Nationalities Represented



When we toured the campus, we were immediately drawn to the beautiful jungle surroundings and the community feel. A big part of the latter comes from the staff and how they interact with one another and the students. Each morning, the kids are warmly welcomed and all the teachers take genuine interest in how the kids are going.



Rachel Fergus and Neil Gunn,
Parents of 2 Chatsworth students
(2023/24)



Did You Know?

Chatsworth has been at, or near, full capacity for over a decade simply by word-of-mouth support from our school community.

Celebrating Achievements

Chatsworth students have performed exceptionally well in which the achievements validated their learning across a broad and balanced curriculum.

IB Diploma Results 2025

The Class of 2025 has achieved exceptional results in their IB Diploma examinations with a 100% pass rate, a top score of 40 points and school average of 34.3 points, which is above the worldwide average of 30.6 points. 23% of our students registered for the IB Diploma were awarded the Bilingual Diploma with a 100% pass rate.



Pass Rate



Average Score



Chatsworth Top Score

Our students consistently achieve strong IBDP results year after year.

| Year | Highest Score | Pass Rate | Average School / Average World Score |
|------|---------------|-----------|--------------------------------------|
| 2024 | 44 | 95.7% | 34 / 30.32 |
| 2023 | 44 | 96.3% | 36 / 30.24 |
| 2022 | 41 | 100% | 39 / 31.98 |
| 2021 | 45 | 100% | 36 / 33.02 |

IB MYP Results 2025

Our Year 11 (MYP5) students have achieved excellent results for the MYP eAssessment in the May 2025 exam session with a 100% pass rate, a joint top score of 49 points and school average of 43 points (out of 56 possible maximum) which well exceeded the world average of 37.71. 22% of our students registered for the IB MYP Certificate were awarded the MYP Bilingual Certificate with a 100% pass rate.

Chatsworth was one of the pioneer schools and remains one of only a handful of international schools in Singapore where MYP students sit the rigorous eAssessment and Personal Project, which is excellent preparation and a precursor to the IB Diploma.



Average Score



Chatsworth Top Score



Average Personal Project Grade

Where Our Graduates Go

Chatsworth graduates have been matriculated or received offers from the universities around the world including the following:



Scan to see full list

Asia

China, People's Republic
Shandong University Medical School

Hong Kong, SAR
City University of Hong Kong
Hong Kong University of Science and Technology
University of Hong Kong

India
Manipal University
Symbiosis International University
Vellore Institute of Technology University
Whistling Woods Institute of Film

Japan
Kyoto University of Advanced Science
International Christian University
Osaka University
Ritsumeikan University
Sophia University
Temple University
Waseda University

Malaysia
Curtin University (Malaysia Campus)
Monash University Malaysia
University of Nottingham Malaysia

Philippines
University of the Philippines

Singapore
James Cook University
Lasalle College of the Arts
Nanyang Technological University
National University of Singapore
Singapore Institute of Management GE
Singapore Management University
Singapore University of Technology and Design

South Korea
Soongsil University
University of Utah, Asia Campus

Australia & New Zealand

Australian National University
Curtin University
Deakin University
Edith Cowan University
Griffith University
Macquarie University
Monash University
Murdoch University
TAFE South Australia
RMIT University
Sydney University of Technology
University of Auckland
University of Canberra
University of Canterbury
University of Melbourne
University of New South Wales
University of Queensland
University of Southern Queensland
University of Sydney
University of Western Australia
University of Wollongong
Victoria University

Canada

Concordia University
Dalhousie University
McGill University
Mount Allison University
Mount Saint Vincent University
Queen's University
Ryerson University
Sheridan College
Simon Fraser University
University of Alberta
University of British Columbia
University of Ontario Institute of Technology
University of Toronto
University of Western Ontario

Europe

Erasmus University Rotterdam
Instituto de Impresa Segovia, Spain
International Fashion Academy, France
Leiden University
Maastricht University
Maynooth University
Medical University of Gdansk, Poland
Metropolitan University College, Denmark
Radboud University
Royal College of Surgeons Ireland
The Hague University of Applied Sciences
Tilburg University
University of Amsterdam
University College Dublin
University of Groningen
University of Limerick
University of Pécs, Hungary
University of Twente
Utrecht University, Netherlands
VIA University College, Denmark

United Kingdom

Arts University Bournemouth
Aston University
Bangor University
Birmingham City University
Bournemouth University
Brunel University London
Bucks New University
Canterbury Christ Church University
Cardiff Metropolitan University
Cardiff University
City University of London
Coventry University
Durham University
Edge Hill University
Edinburgh Napier University
Eindhoven University of Technology
Falmouth University
Gllion Institute of Higher Education
Goldsmiths, University of London
Imperial College London
Keele University
King's College of London
Kingston University London
Lancaster University
Leeds Art University
Leeds Conservatoire
Liverpool John Moores University
London School of Economics & Political Science
Middlesex University
Newcastle University
Northumbria University
Oxford Brookes University
Plymouth University
Queen Margaret University, Edinburgh
Queen Mary University of London
Queen's University Belfast
Regent's University London
Royal Holloway, University of London
Southampton Solent University
Staffordshire University
St George's, University of London
Swansea University
Teesside University
The University of Abertay Dundee
University College London
University of the Arts London
University of Bath
University of Birmingham
University of Brighton
University of Bristol
University of Cardiff
University of Dundee
University of East London
University of Edinburgh
University of Essex
University of Exeter
University of Glasgow
University of Gloucestershire
University of Greenwich
University of Hertfordshire
University of Huddersfield
University of Hull
University of Kent
University of Lancaster
University of Leeds

University of Leicester
University of Lincoln
University of Liverpool
University of Loughborough
University of Manchester
University of Newcastle
University of Northampton
University of Nottingham
University of Portsmouth
University of Reading
University of Salford
University of Sheffield
University of Southampton
University of South Wales
University of Stirling
University of Surrey
University of Sussex
University of the West of England Bristol
University of Warwick
University of West London
University of York

United States of America

Belmont University
Berklee College of Music
Boston College
Boston University
Brandeis University
Brigham Young University
California State University, Sacramento
California State University, San Bernardino
Case Western Reserve University
Columbia College Chicago
Denison University
Drexel University
Embry-Riddle Aeronautical University
- Daytona Beach
Embry-Riddle Aeronautical University
- Prescott
Emory University
Fordham University
Harvard University
High Point University
Indiana University Bloomington
Ithaca College
Lake Forest College
Loyola Marymount University
Manhattanville College
Maryland Institute College of Art
Massachusetts College of Art and Design
McNally Smith College of Music
Michigan State University
New York University
Northeastern University
Ohio Wesleyan University
Pace University
Parsons The New School for Design
Pennsylvania State University
Pratt Institute
Princeton University
Purdue University
Redlands University
San Diego State University
San José State University
Savannah College of Art and Design
School of the Art Institute of Chicago
State University of New York, Buffalo
State University of New York, New Paltz
State University of New York, Plattsburg
Suffolk University
Syracuse University
University of California, Berkeley
University of California, Davis
University of California, Santa Barbara
University of California, San Diego
University of California, Los Angeles
University of Colorado, Boulder
University of Colorado, Denver
University of Illinois, Urbana-Champaign
University of Maine
University of Massachusetts, Amherst
University of Michigan, Ann Arbor
University of New Mexico
University of Oregon
University of Rhode Island
University of Southern California
University of Washington
University of Wisconsin, Madison
Western Michigan University



Primary

K1 to Year 6

Welcome to Primary School

At Chatsworth, we are a proud IB PYP school. The PYP is an inquiry-based curriculum, placing students at the centre of their learning, with teachers being active mentors, facilitators and experts in the classroom.

Teachers strive to develop students' research, communication, self-management, social and thinking skills. As the world changes quickly, we have to prepare our students for lives, employment and relationships that have yet to be dreamed of. The international curriculum offered at Chatsworth encourages the students to question, collaborate, problem solve and lead investigations to develop these essential learning skills.

Chatsworth is highly regarded as a very caring school that values building and nurturing positive relationships, where quality collaboration and communication are essential. Because of our hardworking teachers and the relationships that they build with the students and their families, children love to come to school each day, something that we do not take for granted.

I look forward to having you as part of the Chatsworth family.

Ms Kelley Benjamin
Head of Primary





Kindergarten

Kindergarten 1 and 2 (3 to 5 years old)
IB Primary Years Programme

The early years of a child's education are vital to their future success, setting foundations academically as well as personally and socially. Early childhood at Chatsworth introduces your child to a formal school setting in the world of international education. A positive, affirming and stimulating environment in which young ones can learn and discover their world and grow into happy and engaged learners is of paramount importance.

At Chatsworth, our Kindergarten curriculum is drawn from the globally recognised IB Primary Years Programme (PYP), which is designed for ages 3 to 11 and provides an educational framework that is differentiated to meet the individual needs of each of our students. Our purpose-built Early Childhood Centre caters to the needs of Kindergarten learners and consists of dedicated learning and playing facilities in a safe and secure space for this age group. The Kindergarten classrooms follow an inquiry and play-based curriculum and are carefully resourced and designed to enrich learning opportunities for students.

With our small class sizes, Chatsworth provides our youngest learners with more personalised attention in a safe and nurturing environment under the care of passionate and highly qualified international teachers.



Primary

Years 1 to 6
IB Primary Years Programme

Chatsworth offers the International Baccalaureate Primary Years Programme (IBPYP) that incorporates skills, attitudes, units of inquiry, concepts and the Learner Profile. The skills and attributes developed in the Early Years (K1 - Y3) are immediately put to use, with students taking ownership of their learning, creating rich inquiries and achieving personal and academic goals.

The Junior Years (Y4 - Y6) at Chatsworth give students a chance to shine and grow as individual learners. As students progress through the year levels, they mature as leaders, taking responsibility for school projects, action groups and community events. The

international curriculum encourages the students to question, collaborate, problem solve and lead investigations to develop essential learning skills while fostering intercultural understanding and respect.

The final year of primary school culminates in a PYP Exhibition, a powerful celebration and showcase of student learning and development. Students inquire and apply essential elements of PYP transdisciplinary skills into their culminating project, demonstrating and celebrating the results and action of their learning throughout the primary years.

We use the IB Learner Profile in everything we do at Chatsworth. Students as well as staff are encouraged to recognise and support these attributes with everyone in our community.



Subject Disciplines

English / English as an Additional Language (EAL)

Mandarin (K1 and K2)
Mandarin or French (Years 1 to 6)

Mathematics

Science

Social Studies

Arts (Drama, Music and Visual Art)

Personal, Social and Physical Education

Library (Literacy and Research Skills)

Digital Citizenship/ Keeping Safe Curriculum



Secondary

Year 7 to 13

Welcome to Secondary School

At Chatsworth, we believe in fostering an environment where every individual is encouraged to explore and express themselves. Our IB programmes are built upon the foundation of empowering learners to explore and follow their own paths while fostering a deep appreciation for the perspectives of others on a global scale. In addition, the various school and student-led Service activities we support and run provide avenues for our students to make meaningful contributions to both their immediate and broader communities.

Our IB Middle Years Programme offers a variety of learning and assessment options to meet the needs, interests, and abilities of our students while also developing essential life skills such as empathy and collaboration. Project-based learning, such as the MYP Personal Project, and the Science Fair, are some of the excellent examples of the myriad of ways in which students can inquire, research and creatively share their personal interests and passions.

Providing a unique blend of academic rigour and personal development, our IB Diploma Programme nurtures students to become confident, resilient and adaptable learners. By combining approaches to learning, we are purposefully equipping our future generations with the innovative knowledge and critical skills needed for the challenges and opportunities that lie ahead.

I hope you have a wonderful time touring the campus and look forward to you and your family joining the Chatsworth community.

Ms Siobhan Dean
Head of Secondary





Secondary

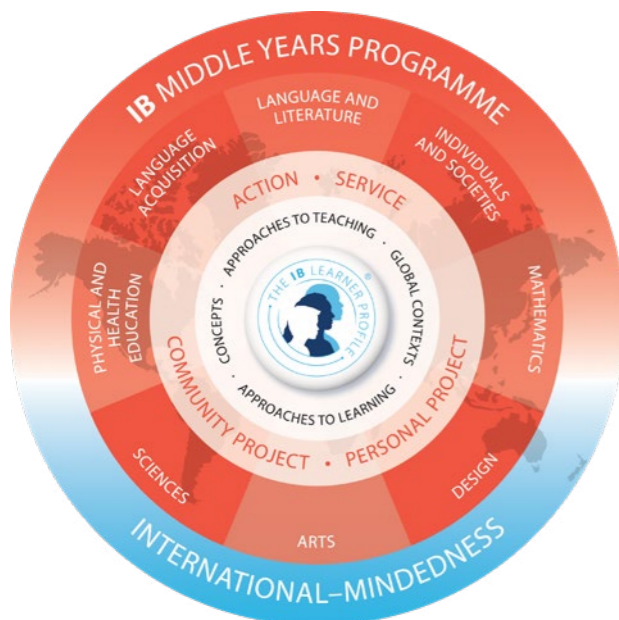
Years 7 to 11
IB Middle Years Programme

The IB Middle Years Programme (MYP) provides a framework of learning that encourages students to be creative, critical and reflective thinkers. The MYP emphasises intellectual challenge, encouraging students to make connections between their studies in traditional subjects and the real world. It fosters the development of skills for communication, intercultural

understanding and global encouragement - essential qualities for young people who are becoming global leaders. The programme aims to help students develop the capacity to become responsible for their own learning and sets them up for success for the Diploma Programme.

“ *My favourite subject is Music as it's something I have loved since childhood. I especially love playing and creating music. In music class, we're given the opportunity to experiment and explore all aspects of music, which is why I love it so much!* ”

Mia Lucijanic,
Year 12 student (2024/25)



The MYP offers subjects from eight subject groups, providing a broad and balanced education for early adolescents. In the final year of the MYP, students complete an independent Personal Project that explores an area of personal interest, over an extended period. They will also sit for the full IB MYP eAssessment at the end of the programme. Chatsworth is one of the few international schools in Singapore to offer the full formal MYP qualification, leading to the MYP Certificate or MYP Course results. Additionally, students who demonstrate additional proficiency in a second language or Mother Tongue can earn the IB MYP Bilingual Certificate.

MYP Language Pathways

As an IB World School all MYP and DP students are required to study two languages. As English is the language of instruction at Chatsworth, it is a requirement that one of those two languages be English. There are three different Language pathways offered at Chatsworth.

| Pathway 1 | Pathway 2 | Pathway 3 |
|--|--|--|
| Language and Literature English | Language and Literature Mother Tongue | Language and Literature English |
| Language Acquisition French or Mandarin | Language Acquisition English | Language and Literature Mother Tongue |

Mother Tongue Programme

The Mother Tongue Programme at Chatsworth provides secondary students with an opportunity to study their mother tongue within the existing school system and is able to support as many languages as required.

The MYP Mother Tongue studies are guided by external Mother Tongue tutors who are trained in the principles and practices of the IB MYP including assessment procedures. Each MYP year level class meets with the Mother Tongue coordinator who provides support sessions in English to help reinforce key MYP concepts and literary skills, whilst monitoring student progress.

Service Learning

Service learning is an integral part of the MYP at Chatsworth. Service learning starts in the classroom, allowing students to use academic knowledge and skills to address genuine community needs within the school and outside of the school. While service learning is introduced on a more structured and timetabled basis in the MYP, students at Chatsworth at all year levels have been involved in service activities from fundraising for charities to raising awareness of environmental issues on campus.



| Subject Groups | Courses Offered |
|---|-----------------------------------|
| MYP Language and Literature | English, Mother Tongue Languages |
| MYP Language Acquisition (2nd Language) | English, French, Mandarin |
| MYP Individuals and Societies | Integrated Humanities |
| MYP Mathematics | Standard and Extended Mathematics |
| MYP Sciences | Integrated Science |
| MYP Design | Design (MYP1 to MYP3) |
| MYP Arts | Music, Drama and Visual Art |
| MYP Physical and Health Education | Physical and Health Education |
| Advisory (Pastoral) | |
| Service as Action | |



Secondary

Years 12 to 13
IB Diploma Programme

The IB Diploma Programme (IBDP) offers a broad and rigorous international curriculum and is the basis of study for the final two years at Chatsworth. The programme is designed to prepare students for further education at the tertiary level, but is also a very valuable qualification in its own right. Recognised and respected by the world's leading universities, the IB Diploma is an internationally recognised qualification for admission to universities and higher education. In Years 12 and 13 students either take the IB Diploma or the DP Course pathway to enable them to earn credits for graduation.



Chatsworth students who earn the requisite credits graduate with the Chatsworth High School Diploma. Our high school diploma is accredited by the Western Association of Schools and Colleges and is widely accepted for admission to post-school programmes.

The Diploma Programme (DP) curriculum is made up of six subject groups and the DP core components, comprising the extended essay, theory of knowledge (TOK) and creativity, activity, service (CAS). Students taking DP Course take six subjects and are required to meet all the CAS obligations.

DP Language Pathways

Pathway 1

Group 1

English A Language & Literature
English A Literature

Group 2

French B or Mandarin B or Spanish
Ab Initio Language Acquisition

Pathway 2*

Group 1

School-Supported Self-Taught
Language A Language & Literature

Group 2

English B Language Acquisition

Pathway 3*

Group 1

English A Language & Literature
English A Literature

Group 1

School-Supported Self-Taught
Language A Language & Literature

* Bilingual Certificate



Creativity, Activity, Service (CAS)

CAS is at the heart of the DP. It offers students an experiential learning environment through a range of different activities. CAS reflects the importance of having a balanced lifestyle that incorporates creative and physical pursuits in addition to helping others, especially the less fortunate.

Students are expected to be involved in CAS activities for a couple of hours a week in a range of balanced activities. This provides a balance to the academic rigour of other subjects. All students must satisfy the requirements of CAS in order to be awarded the Chatsworth High School Diploma and the IB Diploma.

“ One of the CAS experiences I valued most was volunteering at the National Kidney Foundation. I started with helping nurses with administrative work, simply receiving nods of approval from patients on good days. Over time, those nods turned into greetings which eventually grew into meaningful conversations. Seeing them open up made me proud to be a familiar and reliable presence in their weekly routines - a small source of comfort during their dialysis.

Jae-yi Lee,
Year 13 student (2024/25)

Studies in Languages and Literature

Language A: English Language and Literature HL/SL
Language A: English Literature HL
Language A: Literature (School-Supported Self-Taught) SL

Language Acquisition

English B HL
French B HL/SL
Mandarin B HL/SL
Spanish ab initio SL
Mandarin ab initio SL (Pamoja)
Spanish B SL (Pamoja)
French ab initio SL (Pamoja)

Individuals and Societies

Economics HL/SL
History HL/SL
Geography HL/SL
Business Management HL/SL
Psychology HL/SL (Pamoja)
Philosophy SL (Pamoja)

Experimental Sciences

Biology HL/SL
Chemistry HL/SL
Physics HL/SL
Environmental Systems and Societies HL/SL

Mathematics

Mathematics: Analysis and Approaches HL/SL
Mathematics: Applications and Interpretation SL

The Arts

Music HL/SL*
Theatre HL/SL*
Visual Arts HL/SL

*Music and/or Theatre will be offered subject to sufficient numbers.



The Arts

The Arts at Chatsworth is engaging, vibrant and inspiring!



From visual art to drama to arts-related CCAs and events, there are abundant opportunities for Chatsworth students to discover and hone their artistic talents and interests. It's all about holistic education, and the arts is an integral part of such an approach.

Each year, our students continue to wow us with their many talents, from staging Arts Nights to self-directed Art exhibitions to school productions and dance competitions, amongst others. Art gallery visits and field trips are also organised to further broaden students' learning. We have teachers and educators who are involved in the community, playing piano professionally, performing their own songs and covers in live bands, recording and mixing music, singing in choirs, directing and acting in school productions. The love we have for our art forms is well communicated to our students.



The Performing Arts programme at Chatsworth has given me countless opportunities to perform and grow as an artist and as an actress — from lunchtime performances to Arts Night and even The Addams Family musical staged at the Singapore Repertory Theatre. These experiences have allowed me to express myself creatively, collaborate closely with others, build confidence, and continue nurturing my passion for the performing arts.

*Yein (Joy) Lee,
Year 13 student (2025/26)*



Athletics and Sports

The goal of athletics and sports at Chatsworth is to develop a commitment to lifelong physical fitness, life skills such as teamwork, effective communication and leadership.



Chatsworth is an active member of the Athletic Conference Singapore International Schools (ACSIS), which consists of approximately 30 member schools. Athletics and sports at Chatsworth are an extension of the classroom. With a modest student population, we provide equal opportunities for students to be fielded across various sports teams and age groups.

ACSIS runs three seasons between August and May in each academic year. Our students from Year 1 through Year 13 have the opportunity to compete in basketball, badminton, volleyball, football, cross country running, swimming, ultimate frisbee, netball and touch rugby across the three sporting seasons of each academic year.



At Chatsworth International School, our Athletics Programme celebrates diversity, fosters inclusion, and builds a strong community spirit. We believe in the power of participation, where every student has the opportunity to grow, connect, and thrive—all while having fun and embracing the joy of sport.

*Mr Elgin Louis
Athletics Director*



Each academic year, Chatsworth students brought home Gold, Silver and Bronze medals.





CCAs and ECAs

The myriad of co-curricular activities provides opportunities for students to discover new passions and enrich their school life.

Co-Curricular Activities (CCAs) and Extracurricular Activities (ECAs) are an important part of student life. These activities provide opportunities for students to participate in team-based sports, discover new passions, develop social skills, play together and, most importantly, have fun! It is mandatory that students in Years 7 to 12 participate in at least one CCA or sports team per session.

In the secondary school, in addition to various sports teams which are mainly competitive, students can choose from a wide range of CCAs conducted by the teachers. Some of these include Model United Nations, ChatsNews, fitness, dance, school band, and interest clubs.



More than 60 CCAs/ECAs and team-based sports are offered in each of our three seasons each school year. From languages to services to STEM-related activities to recreational sports and performing arts, there are abundant opportunities for students to enrich their school life.



Beyond the Classroom

Experiential learning such as field trips and excursions are an integral part of a holistic education.



At Chatsworth, a balanced curriculum encompasses real world learning that takes place not just within the walls of our classroom but beyond. Our local environment is a powerful resource and in order to enrich learning, field trips take place regularly during the year to support our units of inquiry. Additionally, primary students from Years 4 to 6 attend a one-night residential camp, which is an integral part of our programme. These immersive camps provide a great opportunity for students to become more independent, balanced, collaborative and be risk takers in a safe and supportive environment.

In secondary school, field trips are also organised for students to make connections between their studies in traditional subjects and the real world, thereby broadening their learning experiences. These trips offer opportunities for students to develop social skills, enhance communication, and work collaboratively in teams and promote positive emotional health.



House System

We actively promote our school spirit and ethos through the House system.

Our school spirit and friendly atmosphere are essential to our students and their learning. They are some of our defining attributes and are actively encouraged by our community. Within Chatsworth, all students and staff are divided into three Houses: Changi, Raffles and Sentosa, named after iconic landmarks in Singapore. Houses are populated vertically throughout the school so each House will have primary, lower secondary and upper secondary students.

The house system, embedded into different aspects of school life, is used to inspire students to work towards personal goals, work together in teams, and promote school citizenship.



Student Leadership

Chatsworth students take on various leadership roles to improve and enrich school life.

The Student Council provides a voice for the student body and aims to make the school year more welcoming and engaging. The Student Council also discusses and puts forward ideas to improve and enrich daily life on campus. Students are elected to Student Council executive positions by the student body. Voting takes place at the end of the second semester for the upcoming school year.

At our Primary School, other leadership opportunities include serving as House Captains and Kindness Leaders which help to improve school experience for other primary students. House Captains run activities such as the house point system, and a series of activities and competitions while Kindness Leaders promote care and kindness across the Primary School.



Being the Minister of Communications in the Student Council was such a fun and rewarding experience. I really enjoyed working with all the other executives and homeroom representatives. Everyone was so welcoming, and I made so many new friends. My favourite activities have to be either Songkran or the Halloween Hangout."

Oliver Waterford,
Year 9 Student (2025/26)

Student Services

Our Student Services team provides the support services students need to improve their academic performance and social development.



Student Services is at the heart of Chatsworth. Various teachers and support staff come together regularly to assist students in the areas of Academic Advising, Counselling, Discipline, English as an Additional Language, Guardianship, Health, Learning Support, Pastoral Care and University Advising. Some of the key services provided include:

- individual and group counselling of students
- facilitating a strong pastoral and homeroom programme
- teaching communication and leadership skills
- improving academic performance, and social development
- assisting students with transitions

Student Services also works closely with various community support groups, and provides parent workshops and information sessions to build a strong parent connection.

English as an Additional Language

The English as an Additional Language (EAL) support helps students with their acquisition of English language whilst celebrating their own cultural identity.



A supportive EAL (English as an Additional Language) programme is available to students from Years 1 to 11 who are still developing their proficiency in academic English.

Our immediate goal is to support the students to succeed in all their coursework and to help them fully respond to the tasks and expectations of all their subjects. At the same time, we are augmenting their acquisition of English through vocabulary development, grammar and writing practice, reading and listening comprehension activities, and oral presentation opportunities. These build both the competence and confidence required for students to eventually handle the language demands of academic work independently. Students will take an assessment to determine their language needs and proficiency level in the EAL programme.

Education Technology

We are committed to providing a safe, supportive and meaningful educational approach to integrating technology into the curriculum.

In today's context, effective integration of technology with an established curriculum is "best practice" in the 21st Century classroom. At Chatsworth, our goals are to promote the balanced use of technology to motivate our students to develop deeper conceptual understandings. In addition, we encourage them to ask meaningful questions and cultivate transferable skills that they continually adapt to approach challenges in their lives today and in the future.

We also recognise the growing role of Artificial Intelligence in education and approach AI as a tool to support learning, creativity and critical

thinking, with clear expectations around ethical use, transparency and the importance of human judgement.

The school implements a strong and comprehensive digital citizenship curriculum that promotes confidence and positive engagement with digital technology. We view parents as essential partners in this journey and work collaboratively to develop, review and uphold shared expectations and policies around technology use, both at school and at home.

There are three areas of Digital Citizenship:

Digital Usage

Students are expected to be productive, efficient, show compassion, empathy, and be responsible in their use of technology.

Digital Literacy

Students must ethically engage, critically analyse, and evaluate various sources of digital media.

Digital Safety

Students will cultivate their digital identity showing positive, safe, legal and ethical actions as digital citizens.

Through digital citizenship and literacy, we strive to educate students to create, analyse and consume digital content productively, ethically, responsibly and safely in this digital world.

Our mobile phone guidelines are designed to protect student wellbeing and learning time while teaching responsible, age-appropriate use of personal devices.

We are an Apple and Google school with a 1:1 laptop programme running from Year 3 upwards and iPads and Chromebooks in younger years.



Chatsworth Scholarship

We offer a limited number of scholarships on our IB Diploma Programme each academic year.

At Chatsworth, scholarship students are recognised for not only their exceptional academic performance but also for their contributions to the wider Chatsworth community. In each academic year, there are a limited number of scholarships available for internal students as well as external applicants, on a merit basis.

The full scholarship is valued at more than S\$90,000 (based on a 2-year IB Diploma Programme) and will pay for 100% of a student's school fees and provide the student with a new Macbook laptop. Full scholarships are available to both internal and external candidates. Partial scholarships are also available to existing students starting Year 12 each year.



Chatsworth in the Community

Chatsworth students and the school community regularly raise funds for our adopted charities and other good causes.

The Chatsworth community is active within Singapore and works with other organisations striving to make a difference in the world. Our students are encouraged to engage in acts of kindness and give back to the community. Through such programmes, the students develop holistically and learn to be caring and socially responsible people.

Chatsworth partners with several adopted charities such as Blue Dragon Children's Foundation, Caring for Cambodia and Food Bank Singapore to give students a chance to contribute to those in Singapore and beyond. Besides the adopted charities, the school community also raises funds to benefit other good causes which students help identify.



Chatsworth Parent Group

The CPG team strives to make Chatsworth a friendly, family-oriented community that promotes inclusiveness for everyone.



What sets Chatsworth apart from other international schools is the family-friendly atmosphere found within its corridors. Chatsworth is very fortunate to have had strong and close support from the Chatsworth Parent Group (CPG). Each family at Chatsworth plays a unique role in building a strong school community. Every Chatsworth parent is considered a member of the CPG and is always welcome and encouraged to get involved in school activities and events throughout the year.

Some of the school events which the CPG are involved in and where parent may want to participate include:

- CPG Coffee Mornings
- Cultural Celebration Day
- Book Week
- School Musical/ Concert
- Christmas Market
- Library Assistance
- Field Trips
- Festivities and Performances and more...

Our mission is to bring together students, teachers, parents and guardians to create a harmonious school community by offering support for academic and social events. We warmly welcome parents to our community, and please feel free to get in touch with the CPG Team at any time.

CPG Team

Some Essential Information

Quick information about the school good to know at this stage of your discovery.

At Chatsworth, the school day commences at 9am for Primary and 8.50am Secondary when all students are registered in their homerooms. The Primary children finish their classes at 3.30pm and Secondary students finish their classes at 3.35pm. Primary students enjoy a morning break, a 55-min lunch break and an afternoon recess. Secondary students enjoy a short morning break and 45-min lunch.

Chatsworth operates on a semester calendar with approximately 180 school days each year. The first semester runs from mid-August through mid-December. The second semester runs from January through mid-June.



School Bus and Campus Shuttle Bus

Chatsworth has appointed an independent bus operator, Tong Tar Transport Service to provide transportation. Each school bus has an attendant (only for direct bus transport) and seat belts to ensure the safety of the students. Our campus shuttle bus runs before and after school hours to provide pickup and drop off from nearby Sixth Avenue MRT (Downtown Line). The shuttle service is only available from Monday through Friday on school days and is chargeable at \$2.50 per way.

Tong Tar Transport can be contacted at 6261 5537 or email: chatsworth@tongtar.com



School Uniform and Related Items

Students are required to wear school uniforms purchased from the appointed uniform provider. Students are required to wear appropriate covered footwear and socks. Appropriate sports training shoes must be worn for PE lessons.

We have a 'no hat, no play' policy in primary school. Students have to wear a Chatsworth hat/cap for any outdoor play. Items such as hats, caps, house t-shirts, sweatshirt hoodies and library bags can be purchased from the appointed uniform provider.



School Communication

The school leverages a leading online platform for IB world schools and a digital portfolio platform so that families can better support their child's learning and create a meaningful home-school connection. These platforms eliminate paperwork and provide a way for teachers and students to document their learning and enhance communication to parents and students.



Parent-Teacher-Student Conferences

Parent-Teacher-Student conferences (PTSCs) take place twice per year, typically mid semester and parents are strongly encouraged to attend with their child. Classes are not held on conference days so that teachers can confer with parents and students. PTSCs are an important day as they provide an opportunity for parents, teachers and students to discuss goals and identify strengths. Appointments are required.



Student-Led Conferences

A highlight of the school for the IB Primary Years Programme, Student-led Conferences (SLCs) offer a unique opportunity for primary students to take the lead in sharing their learning progress, reflecting on their growth and showcasing their achievements with parents.

School Canteen

Chatsworth has a full-service canteen that offers a variety of breakfast and lunch options for all dietary needs and preferences. We work closely with our canteen operator, Cezars Kitchen, to promote a healthy diet and lifestyle for our students.

The canteen is cashless. While wristbands are issued to Years 3 to 6 students for use at the canteen, secondary students can use their student ID cards. Both the wristband and student ID card work as a cash card where money can be added either online or via the kiosk located at school. The canteen accepts credit cards. Early years parents can pay for their child's lunch and snack orders in advance.



Class / Year Level Parents

Our Class Parent is an unofficial alternate liaison / support for Year level parents to seek clarification or assistance in school issues related to the school year. While in general, all parents are encouraged to communicate directly with the school, there may be times when parents wish to seek clarification from a "fellow parent."



Enrolment and Placement

Quick information about the school good to know at this stage of your discovery.

Incoming students will be placed in year levels based upon their age and previous educational level. Any exception will be on a case-by-case basis at the discretion of the Head of Primary or Head of Secondary.



Primary Enrolment by Age

| Age as of Sep 1st of the Year of Entry | Year Level |
|--|-------------------|
| 3 years old | IB Kindergarten 1 |
| 4 years old | IB Kindergarten 2 |
| 5 years old | IB PYP Year 1 |
| 6 years old | IB PYP Year 2 |
| 7 years old | IB PYP Year 3 |
| 8 years old | IB PYP Year 4 |
| 9 years old | IB PYP Year 5 |
| 10 years old | IB PYP Year 6 |

Enrolled kindergarten students will not be able to start school unless they are toilet trained and able to go to the toilet independently.

Secondary Placement

| Age as of Sep 1st of the Year of Entry | Year Level |
|--|---------------|
| 11 years old | IBMYP Year 7 |
| 12 years old | IBMYP Year 8 |
| 13 years old | IBMYP Year 9 |
| 14 years old | IBMYP Year 10 |
| 15 years old | IBMYP Year 11 |
| 16 years old | IBDP Year 12 |
| 17 years old | IBDP Year 13 |

Generally, the placement for secondary level is as above. However, the school reserves the right to offer and place your child at the appropriate year level based on a review of their previous educational level.

Admission Process

Our admissions process is straightforward and simple and our friendly Admissions team is here to support you.



Scan the QR Code to apply online

We are excited you are considering Chatsworth as a school for your child, and we want to support you throughout the admissions process. Applications are open throughout the year. The admissions and application process begins when parents complete the application form via the online portal.

Step 01

Submit Application

Submit your application via the OpenApply portal. A non-refundable application fee is payable for any student application to be considered. Additionally, please upload the necessary supporting documents and information to the portal.

Step 02

Application Review

Applications and the submitted documents will be reviewed by our academic heads and reference checks made. Where necessary, we will request for additional information/ documentation and arrange for an interview with the student.

Step 03

Placement Offer

Upon approval of application and subject to place availability, the school will make an offer of placement via email. To secure a place at Chatsworth, a confirmation fee (one-time payment for new students) is payable.

The school will then offer a Student Contract and a Letter of Acceptance followed by an invoice for school and course fee payment. Full fee payment is required within 14 days of the date of signing the Student Contract or before the child starts school to confirm and secure the offered place.

Step 04

Welcoming Student

Before commencing studies at Chatsworth, students and parents will receive a welcome letter with details of the student's homeroom and other important information such as uniforms and transportation.

Discover Chatsworth

We look forward to hosting you at our campus whether virtually or in-person.



Whether you currently reside in Singapore or are considering moving your family here and would like to know more about our school, we welcome you to contact Admissions to make an appointment for a campus visit during school hours.

Open House

During our scheduled open house, you will get the opportunity to meet our senior academic leadership team, teachers, students and supportive parents, ask questions and find out more about our curriculum and school values.

Observe our community in action, tour the campus and facilities and discover if Chatsworth is an ideal school for your child and your family.

Stay tuned for our next open house!



Chatsworth supports kids in being open-minded, taking risks and appreciating differences. These are values that our kids grow with so we felt that this is the right school for our boys. We're impressed with the IB programme of hands-on learning and exploring important topics. Our sons have developed a joy for learning and it's an amazing feeling to see them being so excited every day to go to school!



Kalypso and Christos Anagnostopoulos,
Parents of 2 Chatsworth students (2024/25)



Find out more about Our Community Voices

Chatsworth International School

📍 72 Bukit Tinggi Road, Singapore 289760 ✉ admissions.bt@chatsworth.com.sg

☎ +65 6463 3201

🌐 www.chatsworth.com.sg

